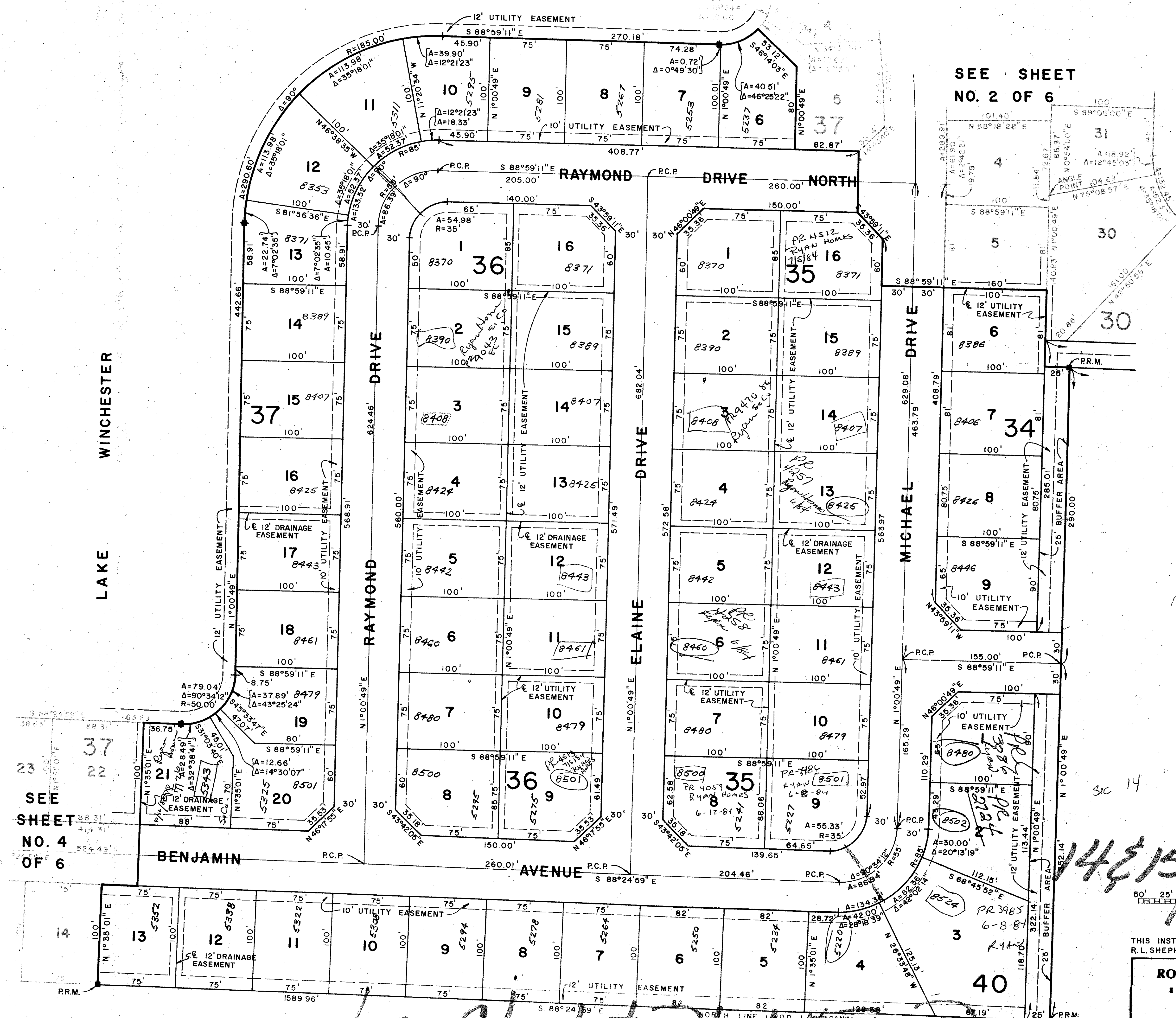


PLAT NO. IV-B LE CHALET (P.U.D.)

IN SECTIONS 14 & 15, TOWNSHIP 45 SOUTH, RANGE 42 EAST
PALM BEACH COUNTY, FLORIDA
IN 6 SHEETS SHEET NO. 5

61

STATE OF FLORIDA
COUNTY OF PALM BEACH
This Plat was filed for record at _____
this _____ day of _____
19 _____, and duly recorded in Plat Book No. _____
on page _____
JOHN B. DUNKLE, Clerk Circuit Court
By _____, D. C.
FLOOD ZONE "B"



SEE SHEET
NO. 2 OF 6

SEE
SHEET
NO. 4
OF 6

Sec 14
0270-307
14 & 15 / 45 / 42

34
37/61

THIS INSTRUMENT WAS PREPARED BY
R.L. SHEPARD IN THE OFFICE OF

ROSSI AND MALAVASI ENGINEERS, INC. WEST PALM BEACH, FLORIDA		PLAT NO. IV-B LE CHALET (P.U.D.) IN 6 SHEETS SHEET NO. 5	
Date	MAY, 1977	Designed	F. McELROY
Approved		Checked	
Scale	1" = 50'	Job No.	4203-77
Sheet	5 of 6	File No.	

Le Chalet Plat IV - Pud